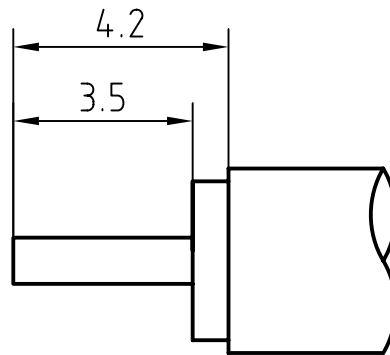


CABLE(UT141,RG402)



5	1	Coupling nut	Brass/Nickel plated	
4	1	O ring	Silicone rubber	
3	1	Body	Brass/SUCOplated	
2	1	Insulator	PTFE	
1	1	Center contact	Brass/Gold plated	
Itemref	Quantity	Title/Name, designation, material, dimension etc		Article No./Reference

Designed by  
xio xang

Checked by  
jing lo

Approved by - date  
jing chan

File name  
N-131100E

Date  
07.03.20

Scale  
3 : 1



N-131100E

Edition

Sheet  
1/1

# CHARACTERISTICS

DESCRIPTION: N Type male connector

## Electrical data:

Impedance:	50 ohm
Frequency range:	DC to 11 GHz
Return loss:	≥28dB, DC to 2.5 GHz ≥23dB, 2.5 to 4 GHz ≥18dB, 4 to 8 GHz
Insertion loss:	≤0.05dB, DC-4GHz
Insulation resistance:	≥5000MΩ
Test voltage:	2500 V rms
Working voltage:	1400 V rms
Contact resistance:	
1). Centre contact:	1.0 mΩ
2). Outer conductor:	0.25 mΩ
Power handling (at 20 °C, sea level, VSWR 1.0):	1000 W @ 1 GHz 700 W @ 2 GHz

## Environmental data:

Temperature rating:	-55 °C to 155 °C
2002/95/EC (RoHS):	Compliant

## Mechanical data:

Mating cycles:	≥500
Center contact captivation:	≥28N(axial)
Coupling test torque:	≤1.7 Nm
Recommended torque:	0.7 Nm to 1.1 Nm

## Suitable cables:

UT141,RG402