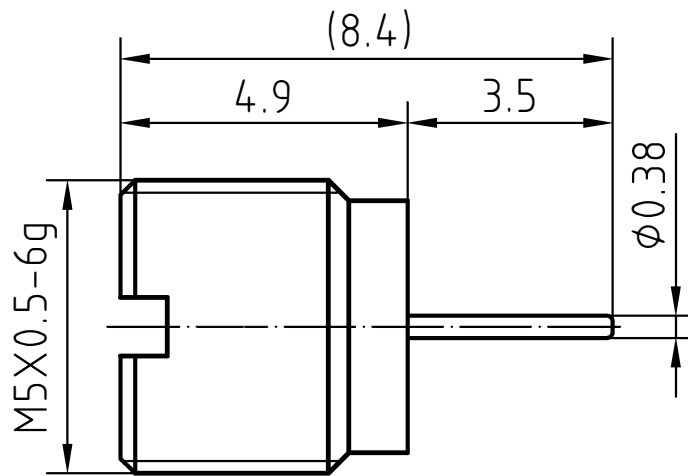
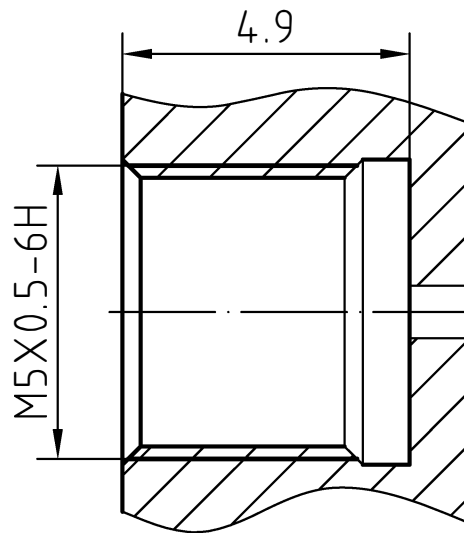


DRAWING



MOUNTING HOLE



3	1	Body	Brass/Gold plated
2	1	Insulator	PTFE
1	1	Center contact	Brass/Gold plated

Designed by
Xio XangChecked by
Jing LoApproved by
Jing ChanFile name
SMP(L)-331100Date
25.04.01Scale
6 : 1**RF CONNEC****SMP(L)-331100**Edition
1.0Sheet
1/1

CHARACTERISTICS

DESCRIPTION:

SMP Type male connector (limited detent)

Electrical data:

<i>Impedance:</i>	50 ohm
<i>Frequency range:</i>	DC to 26.5 GHz
<i>VSWR:</i>	$\leq 1.05 + 0.015 \times f \text{ [GHz]}$
<i>Insertion loss:</i>	$\leq 0.1 \times \sqrt{f \text{ [GHz]}} \text{ dB}$
<i>Insulation resistance:</i>	$\geq 5000 \text{ M}\Omega$
<i>Test voltage:</i>	500 V rms
<i>Working voltage:</i>	335 V rms
<i>Contact resistance:</i>	
1). Centre contact:	6.0 m Ω
2). Outer conductor:	2.0 m Ω

Environmental data:

<i>Temperature rating:</i>	-65 ° C to +165 ° C
<i>2002/95/EC (RoHS):</i>	Compliant

Mechanical data:

<i>Mating cycles:</i>	
- if mating part is smooth bore:	≥ 1000
- if mating part is limited detent:	≥ 500
- if mating part is full detent:	≥ 100
<i>Center contact captivation:</i>	$\geq 7 \text{ N(axial)}$
<i>Engagement force:</i>	
- smooth bore:	$\leq 9 \text{ N.}$
- limited detent:	$\leq 45 \text{ N.}$
- full detent:	$\leq 68 \text{ N.}$
<i>Disengagement force:</i>	
- smooth bore:	$\geq 2.2 \text{ N.}$
- limited detent:	$\geq 9 \text{ N.}$
- full detent:	$\geq 22 \text{ N.}$

Suitable cables:

N/A