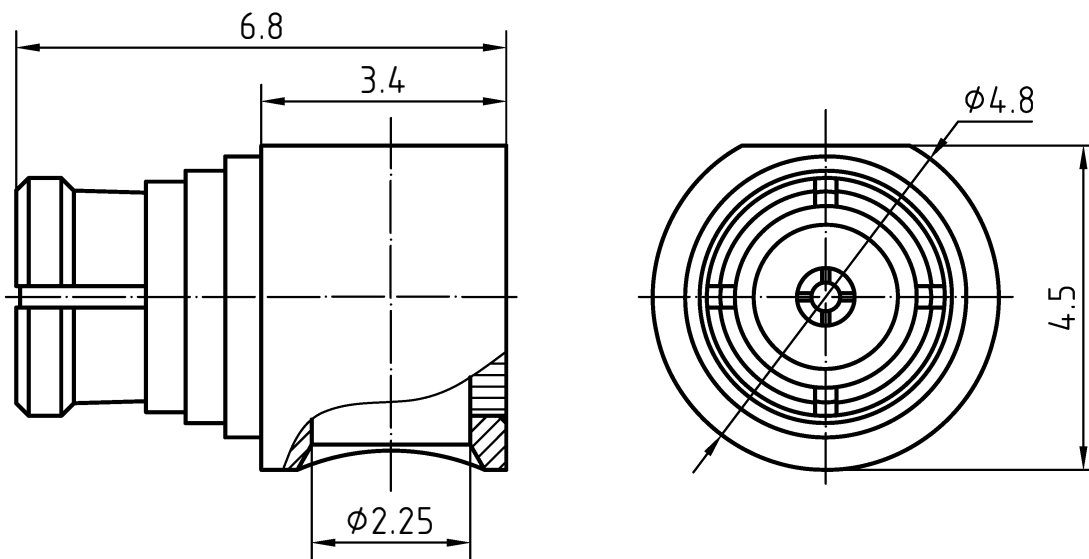
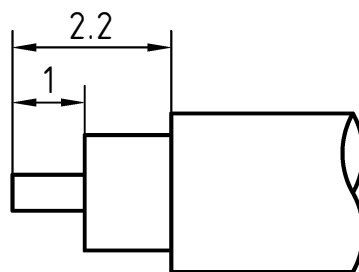


DRAWING



CABLE(UT086,RG405,670-086)



4	1	Outer contact	Beryllium copper/Gold plated	
3	1	Body	Brass/Gold plated	
2	1	Insulator	PTFE	
1	1	Center contact	Beryllium copper/Gold plated	

Designed by
Xio XangChecked by
Jing LoApproved by
Jing ChanFile name
SMP-132200FDate
07.08.22Scale
10 : 1**RF CONNEC**

SMP-132200F

Edition
1.0Sheet
1/1

CHARACTERISTICS

DESCRIPTION:	SMP Type female R/A connector for .086
--------------	--

Electrical data:

Impedance:	50 ohm
Frequency range:	DC to 26.5 GHz
Return loss:	≥30dB, DC-4GHz
	≥20dB, 4-12GHz
	≥18dB, 12-26.5GHz
Insertion loss:	≤0.1 X $\sqrt{f[\text{GHz}]}$ dB, DC-12GHz
Insulation resistance:	≥5000MΩ
Test voltage:	500 V rms
Working voltage:	335 V rms
Contact resistance:	
1). Centre contact:	6.0 mΩ
2). Outer conductor:	2.0 mΩ

Environmental data:

Temperature rating:	-65 ° C to +165 ° C
2002/95/EC (RoHS):	Compliant

Mechanical data:

Mating cycles:	
- if mating part is smooth bore:	≥ 1000
- if mating part is limited detent:	≥ 500
- if mating part is full detent:	≥ 100
Center contact captivation:	≥ 7 N(axial)
Engagement force:	
- smooth bore:	≤ 9 N.
- limited detent:	≤ 45 N.
- full detent:	≤ 68 N.
Disengagement force:	
- smooth bore:	≥ 2.2 N.
- limited detent:	≥ 9 N.
- full detent:	≥ 22 N.

Suitable cables:

UT086,RG405,670-086