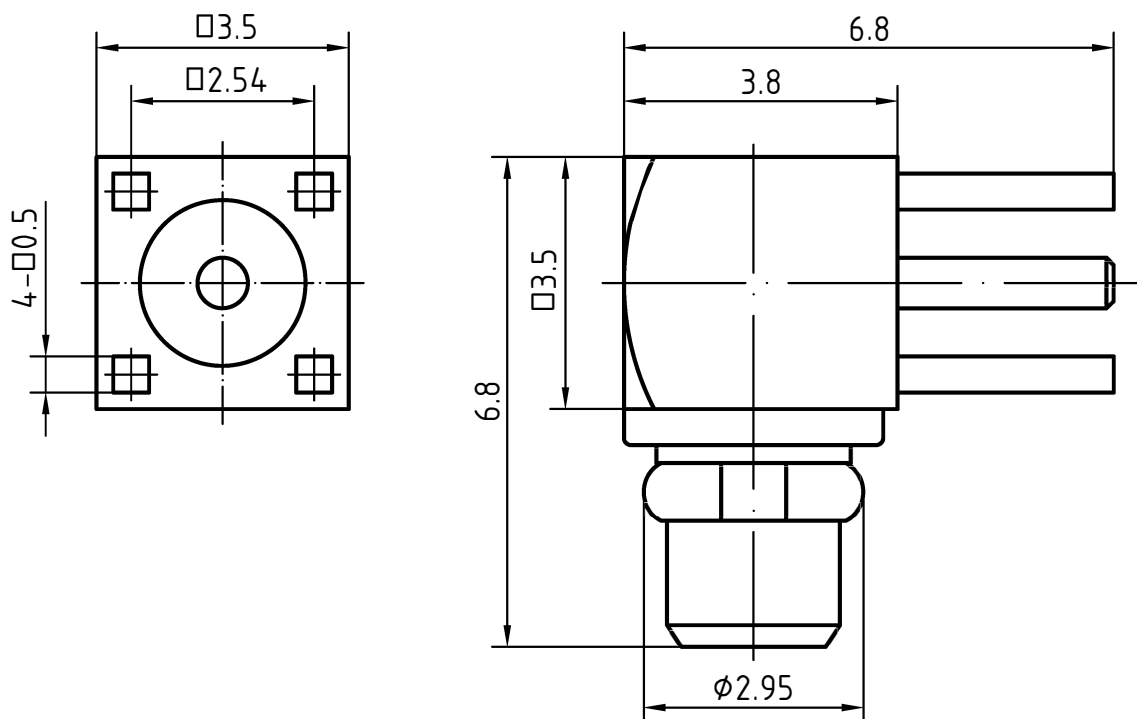
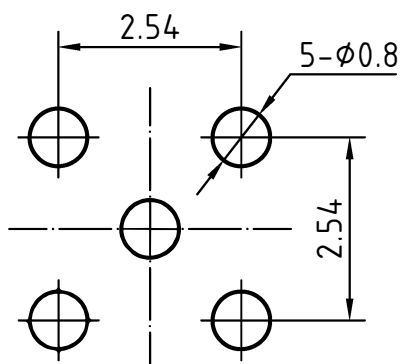


## DRAWING



MOUNTING HOLE



4	1	Body	Brass/Gold plated	
3	1	Spring ring	Beryllium copper/Gold plated	
2	1	Insulator	PFTE	
1	1	Center contact	Brass/Gold plated	

Designed by  
Xio XangChecked by  
Jing LoApproved by  
Jing ChanFile name  
MMCX-331200Date  
12.01.10Scale  
8 : 1**RF CONNEC**

MMCX-331200

Edition  
1.0Sheet  
1/1

# CHARACTERISTICS

## DESCRIPTION:

MMCX Type male R/A connector for PCB solder legs

### Electrical data:

<i>Impedance:</i>	<i>50 ohm</i>
<i>Frequency range:</i>	<i>DC to 6.0 GHz</i>
<i>VSWR:</i>	$\leq 1.05 + 0.05 \times f \text{ [GHz]}$
<i>Insertion loss:</i>	$\leq 0.15 \times \sqrt{f \text{ [GHz]}} \text{ dB}$
<i>Insulation resistance:</i>	$\geq 1000 \text{ M}\Omega$
<i>Test voltage:</i>	<i>500 V rms</i>
<i>Working voltage:</i>	<i>170 V rms</i>
<i>Contact resistance:</i>	
1). Centre contact:	<i>10.0 m<math>\Omega</math></i>
2). Outer conductor:	<i>5.0 m<math>\Omega</math></i>
<i>RF leakage(measured at 1GHz):</i>	$\geq 70 \text{ dB}$

### Environmental data:

<i>Temperature rating:</i>	<i>-65 ° C to +165 ° C</i>
<i>2002/95/EC (RoHS):</i>	<i>Compliant</i>

### Mechanical data:

<i>Mating cycles:</i>	$\geq 500$
<i>Center contact captivation:</i>	$\geq 10 \text{ N(axial)}$
<i>Engagement force:</i>	$\leq 15 \text{ N}$
<i>Disengagement force:</i>	<i>6N~15N</i>

### Suitable cables:

N/A