

## DRAWING

A

A

B

B

C

C



MOUNTING HOLE

D

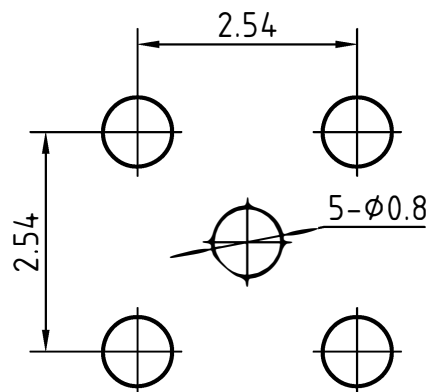
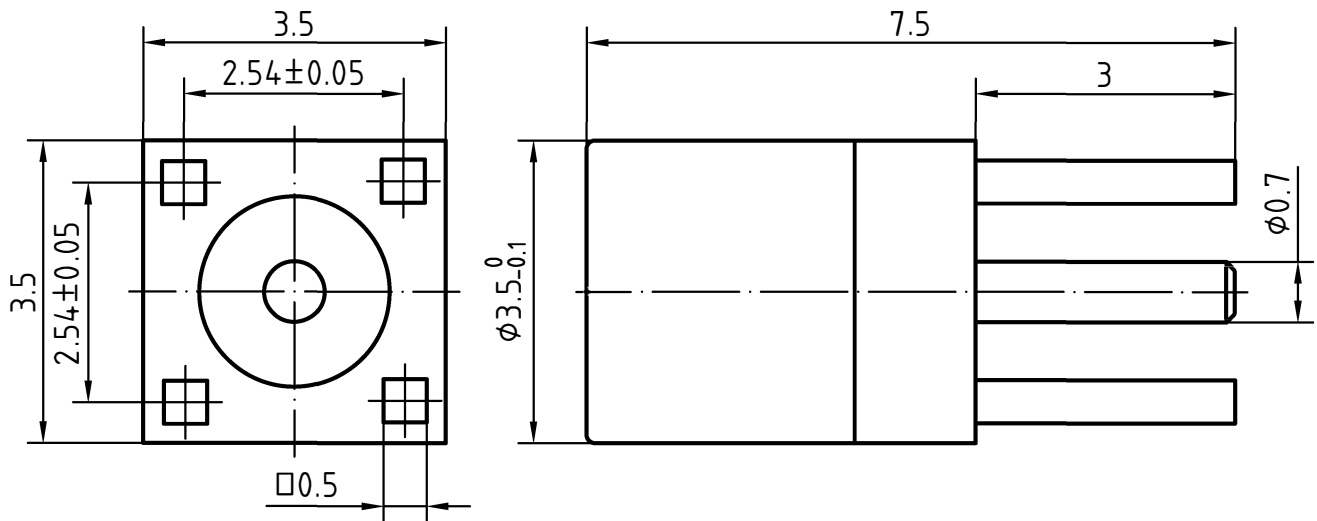
D

E

E

F

F



3	1	Body	Brass/Gold plated	
2	1	Insulator	PTFE	
1	1	Center contact	Beryllium copper/Gold plated	

Designed by  
Xio XangChecked by  
Jing LoApproved by  
Jing ChanFile name  
MMCX-332100Date  
07.04.03Scale  
10 : 1**RF CONNEC**

MMCX-332100

Edition  
1.0Sheet  
1/1

# CHARACTERISTICS

DESCRIPTION:

MMCX Type female str for PCB solder legs

## Electrical data:

Impedance:	50 ohm
Frequency range:	DC to 6.0 GHz
VSWR:	$\leq 1.05 + 0.05 \times f \text{ [GHz]}$
Insertion loss:	$\leq 0.15 \times \sqrt{f \text{ [GHz]}} \text{ dB}$
Insulation resistance:	$\geq 1000 \text{ M}\Omega$
Test voltage:	500 V rms
Working voltage:	170 V rms
Contact resistance:	
1). Centre contact:	10.0 m $\Omega$
2). Outer conductor:	5.0 m $\Omega$
RF leakage(measured at 1GHz):	$\geq 70 \text{ dB}$

## Environmental data:

Temperature rating:	-65 ° C to +165 ° C
2002/95/EC (RoHS):	Compliant

## Mechanical data:

Mating cycles:	$\geq 500$
Center contact captivation:	$\geq 10 \text{ N(axial)}$
Engagement force:	$\leq 15 \text{ N}$
Disengagement force:	6N~15N

## Suitable cables:

N/A