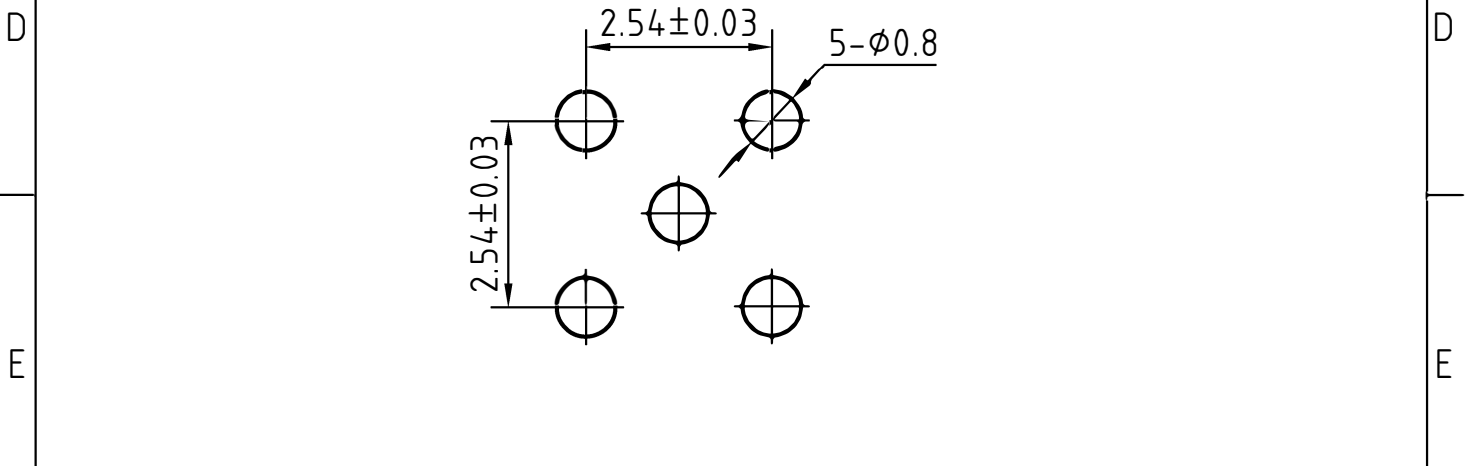



 MOUNTING HOLE



3	1	Body	Brass/Gold plated	
2	1	Insulator	PTFE	
1	1	Center contact	Beryllium copper/Gold plated	
Itemref	Quantity	Title/Name, designation, material, dimension etc		Article No./Reference
Designed by Xio Xang	Checked by Jing Lo	Approved by Jing Chan	File name MMCX-332200	Date 07.02.12
				Scale 1:1



MMCX-332200

Edition  
1.0

Sheet  
1/1

# CHARACTERISTICS

## DESCRIPTION:

MMCX Type female R/A connector for PCB

### Electrical data:

<i>Impedance:</i>	50 ohm
<i>Frequency range:</i>	DC to 6 GHz
<i>VSWR:</i>	$\leq 1.1 + 0.05 \times f \text{ [GHz]}$
<i>Insertion loss:</i>	$\leq 0.25 \times \sqrt{f \text{ [GHz]}} \text{ dB}$
<i>Insulation resistance:</i>	$\geq 1000 \text{ M}\Omega$
<i>Test voltage:</i>	500 V rms
<i>Working voltage:</i>	170 V rms
<i>Contact resistance:</i>	
1). Centre contact:	10.0 m $\Omega$
2). Outer conductor:	5.0 m $\Omega$
<i>RF leakage(measured at 1GHz):</i>	$\geq 70 \text{ dB}$

### Environmental data:

<i>Temperature rating:</i>	-65 ° C to +165 ° C
<i>2002/95/EC (RoHS):</i>	Compliant

### Mechanical data:

<i>Mating cycles:</i>	$\geq 500$
<i>Center contact captivation:</i>	$\geq 10 \text{ N(axial)}$
<i>Engagement force:</i>	$\leq 15 \text{ N}$
<i>Disengagement force:</i>	6N~15N

### Suitable cables:

N/A